

| DNP | BG | USA | ISO | CH2 | CH3 | øE | L1 | L2 | L3 | F | COD. (F) | COD. (M) |
|-----|----|-----|------|-----|-----|----|-----|----|----|----------|---------------|---------------|
| 10 | 2 | 06 | 10 | 22 | 22 | 31 | 102 | 69 | 51 | G 3/8 | PPV3.1010.712 | PPV3.1010.713 |
| 13 | 3 | 08 | 12.5 | 30 | 30 | 38 | 111 | 73 | 60 | G 3/8 | PPV3.1310.212 | PPV3.1310.213 |
| | | | | | | | 117 | 76 | 63 | G 1/2 | PPV3.1313.212 | PPV3.1313.213 |
| | | | | | | | 105 | 70 | 57 | M 16x1.5 | PPV3.1316.702 | PPV3.1316.703 |
| | | | | | | | 111 | 73 | 60 | M 22x1.5 | PPV3.1322.702 | PPV3.1322.703 |

CARATTERISTICHE TECNICHE

Materiali: acciaio zincato e passivato giallo con parti sollecitate carbonitrate o temprate ad induzione. 12 sfere radiali di aggancio UNI 100CR6. **Guarnizioni:** in gomma nitrilica NBR. Altre qualità a richiesta. **Temperatura di esercizio:** con guarnizioni standard - 25°C + 125°C. **Antiestrusori:** in Teflon puro. **Filettature:** metriche e G (BSP) esterne con svasatura a 60°.

TECHNICAL INFORMATION

Materials: zinc-plated and yellow bichromated steel with all high stressed components carbonitrided or hardened by induction. Locking is provided by 12 balls UNI 100CR6. **Seals:** standard in nitrile NBR. Other seals on request. **Working temperatures:** with NBR standard seals - 25°C + 125°C. **Back-up ring:** in pure Teflon. **Threads:** outside metric and G (BSP) with 60° cone.

TECHNISCHE MERKAMALE

Werkstoff: verzinkter und gelb chromatierter Stahl mit allen verschleissbeanspruchten Komponenten carbonitriert oder induktivgehärtet. 12 Verriegelungskugeln UNI 100CR6. **Dichtungen:** aus Nitril NBR lieferbar. Andere Dichtungen auf Anfrage ebenfalls lieferbar. **Betriebstemperatur:** mit NBR Standard-Dichtung - 25°C + 125°C. **Stuetzring:** aus rein Teflon. **Gewinde:** metrische und G (BSP) Aussengewinde mit kegel 60°.

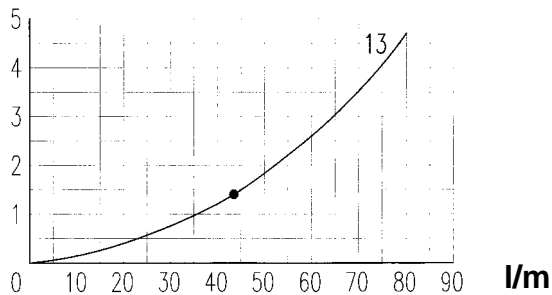
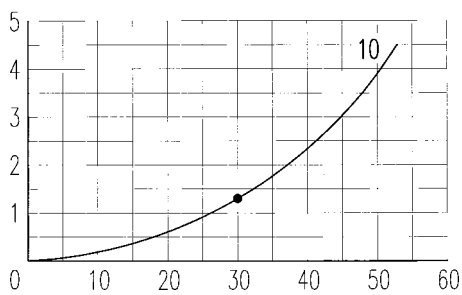
CARACTERISTIQUES TECHNIQUES

Matériel: acier zingué et bichromaté jaune avec les composants soumis à sollicitation carbonitrurés ou trempés à induction. 12 billes de verrouillage UNI 100CR6. **Joints:** nitrile NBR en standard. Autres qualités sur demande. **Température de service:** avec joints standard - 25°C + 125°C. **Bague anti-extrusion:** en Teflon pur. **Taraudages:** métriques ou G (BSP) externes avec cône à 60°.

| Dimensione nominale Nominal size Nennmass Dimension nominale | | | | Press. max d'esercizio Max working pressure Max Betriebsdruck Press. de service max | Portata nominale Rated flow Durchfluss Débit | Pressione min di scoppio / Min burst pressure Min Berstdruck / Pression d'éclatement min | | | Spillaggio / Fluid spillage Ölverlust / Ecoulement | |
|---|----|-----|------|--|---|---|-------------------------------------|---|---|-------|
| DNP | BG | USA | ISO | | | Maschio / Male Stecker / Måle | Femmina / Female Muffe / Femelle | Innestato / Coupled Gekuppelt / Accouplé | | (bar) |
| 10 | 2 | 06 | 10 | 9 | 270 | 30 | 1060 | 1980 | 1100 | 1.9 |
| 13 | 3 | 08 | 12.5 | 10.6 | 250 | 43 | 1030 | 1580 | 1120 | 2.7 |

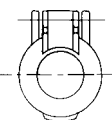
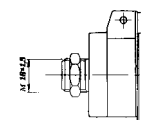
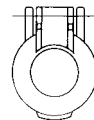
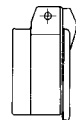
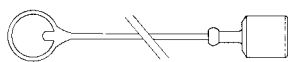
PERDITA DI CARICO / PRESSURE DROP / DRUCKVERLUST / DEBIT DE PRESSION (Δp bar - l/m)

Δp (bar)



ACCESSORI / ACCESSORIES / ZUBEHÖR / ACCESSOIRES

| DNP size | Tappo per femmina Female dust plug Staubstecker Bouchon pour fem. | Cappuccio per masc. Male dust cap Staubkappe Capuchon pour mâle | Colore Colour Farbe Couleur | Materiale Material Werkstoff Matériel | DNP size | Protezione per fem. Automatic fem. caps Klappdeckel für Muffe Protection pour fem. | Supporto per maschio Automatic male caps Steckerhalter Protection pour mâle | Colore Colour Farbe Couleur | Materiale Material Werkstoff Matériel |
|----------|--|--|--------------------------------------|--|----------|---|--|--------------------------------------|--|
| 10 | SPAV.10002 | SPAV.10003 | ROSSO / RED | POLYETHYLENE | 13 | SPPV.13302 | SPPV.13303 | NERO / BLACK | NYLON |
| 13 | SPAV.13002 | SPAV.13003 | ROSSO / RED | PVC | 13 | SPPV.13312 | | GIALLO / YELLOW | NYLON |
| 13 | SPAV.13012 | SPAV.13013 | GIALLO / YELLOW | PVC | 13 | SPPV.13322 | | VERDE / GREEN | NYLON |
| 13 | SPAV.13022 | SPAV.13023 | VERDE / GREEN | PVC | 13 | SPPV.13332 | | BLU / BLUE | NYLON |
| 13 | SPAV.13032 | SPAV.13033 | BLU / BLUE | PVC | 13 | SPPV.13342 | | ROSSO / RED | NYLON |
| 13 | SPAV.13042 | SPAV.13043 | NERO/BLACK | PVC | | | | | |



GUARNIZIONI DI RICAMBIO / SPARE PARTS / ERSATZDICHTUNGEN / JOINTS

| DNP size | O-RING FEMMINA / FEMALE O-RING MUFFE O-RING / O-RING FEMELLE | ANTIESTRUSORE FEMMINA / FEMALE BACK-UP RING MUFFE STÜTZRING / CONTRE-JOINT FEMELLE |
|----------|---|---|
| 10 | PPV.010.120 NBR | PPV.010.120 V VITON |
| 13 | PPV.013.120 | PPV.013.120 V EPDM |
| 10 | | PPV.010.130 PTFE |
| 13 | | PPV.013.130 |