

DNP	BG	USA	ISO	ØT	CH2	CH3	ØE	L1	L2	L3	F	COD. (F)	COD. (M)										
10	2	06	10	06L	22	22	34	94	62	47	M 12x1.5	PVV3.1012.302	PVV3.1012.303										
				08L	22	22	34	94	62	47	M 14x1.5	PVV3.1014.302	PVV3.1014.303										
				10L	22	22	34	96	63	48	M 16x1.5	PVV3.1016.302	PVV3.1016.303										
				12L	22	22	34	96	63	48	M 18x1.5	PVV3.1018.302	PVV3.1018.303										
13	3	08	12.5	08L	30	30	42	97	64	50	M 14x1.5	PVV3.1314.302	PVV3.1314.303										
				10L	30	30	42	99	65	51	M 16x1.5	PVV3.1316.302	PVV3.1316.303										
				12L	30	30	42	99	65	51	M 18x1.5	PVV3.1318.302	PVV3.1318.303										
				15L	30	30	42	101	66	52	M 22x1.5	PVV3.1322.302	PVV3.1322.303										
18L	30	30	42	101	66	52	M 26x1.5	PVV3.1326.302	PVV3.1326.303														
										20	4	12	20	12L	36	36	47.5	123	81	63	M 18x1.5	PVV3.2018.302	PVV3.2018.303
										15L				36	36	47.5	125	82	64	M 22x1.5	PVV3.2022.302	PVV3.2022.303	
										18L				36	36	47.5	125	82	64	M 26x1.5	PVV3.2026.302	PVV3.2026.303	
22L	36	36	47.5	129	84	66	M 30x2	PVV3.2030.302	PVV3.2030.303														
25	5	16	25	18L	41	41	E 55	138	93	71	M 26x1.5	PVV3.2526.302	PVV3.2526.303 E										
				18L	41	41	Ø 55	71	M 26x1.5	PVV3.2526.303 T													
				22L	41	41	E 55	142	95	73	M 30x2	PVV3.2530.302	PVV3.2530.303 E										
				22L	41	41	Ø 55	73	M 30x2	PVV3.2530.303 T													
				28L	41	41	E 55	142	95	73	M 36x2	PVV3.2536.302	PVV3.2536.303 E										
				28L	41	41	Ø 55	73	M 36x2	PVV3.2536.303 T													
				35L	46	46	E 55	146	97	75	M 45x2	PVV3.2545.302	PVV3.2545.303 E										
				35L	46	46	Ø 55	75	M 45x2	PVV3.2545.303 T													
10	2	06	10	08S	22	22	34	98	64	49	M 16x1.5	PVV3.1016.402	PVV3.1016.403										
				10S	22	22	34	98	64	49	M 18x1.5	PVV3.1018.402	PVV3.1018.403										
				12S	22	22	34	98	64	49	M 20x1.5	PVV3.1020.402	PVV3.1020.403										
13	3	08	12.5	10S	30	30	42	101	66	52	M 18x1.5	PVV3.1318.402	PVV3.1318.403										
				12S	30	30	42	101	66	52	M 20x1.5	PVV3.1320.402	PVV3.1320.403										
				14S	30	30	42	105	68	54	M 22x1.5	PVV3.1322.402	PVV3.1322.403										
				16S	30	30	42	105	68	54	M 24x1.5	PVV3.1324.402	PVV3.1324.403										
				20S	30	30	42	109	70	56	M 30x2	PVV3.1330.402	PVV3.1330.403										
20	4	12	20	10S	36	36	47.5	125	82	64	M 18x1.5	PVV3.2018.402	PVV3.2018.403										
				12S	36	36	47.5	125	82	64	M 20x1.5	PVV3.2020.402	PVV3.2020.403										
				14S	36	36	47.5	129	84	66	M 22x1.5	PVV3.2022.402	PVV3.2022.403										
				16S	36	36	47.5	129	84	66	M 24x1.5	PVV3.2024.402	PVV3.2024.403										
				20S	36	36	47.5	131	86	68	M 30x2	PVV3.2030.402	PVV3.2030.403										
25	5	16	25	20S	41	41	E 55	146	97	75	M 30x2	PVV3.2530.402	PVV3.2530.403 E										
				20S	41	41	Ø 55	75	M 30x2	PVV3.2530.403 T													
				25S	41	41	E 55	150	99	77	M 36x2	PVV3.2536.402	PVV3.2536.403 E										
				25S	41	41	Ø 55	77	M 36x2	PVV3.2536.403 T													
				30S	46	46	E 55	154	101	79	M 42x2	PVV3.2542.402	PVV3.2542.403 E										
				30S	46	46	Ø 55	79	M 42x2	PVV3.2542.403 T													

CARATTERISTICHE TECNICHE

Materiali: acciaio al carbonio e acciai speciali zincati e passivati gialli. **Guarnizioni:** in gomma nitrilica NBR. Altre qualità a richiesta. **Temperatura di esercizio:** con guarnizioni standard - 25°C + 125°C. **Antiestrusioni:** in Teflon puro. **Filettature:** metriche esterne secondo la norma DIN 2353 L (leggera) o S (pesante). Altre filettature a richiesta.

TECHNICAL INFORMATION

Materials: carbon and special steel zinc-plated and yellow bichromated. **Seals:** standard in nitrile NBR. Other seals on request. **Working temperatures:** with NBR standard seals - 25°C + 125°C. **Back-up ring:** in pure Teflon. **Threads:** outside metric according to DIN 2353 L (light) or S (heavy). Other threads on request.

TECHNISCHE MERKMALE

Werkstoff: Kohlenstoff-und Sonderstahl, verzinkt und gelb chromatiert. **Dichtungen:** aus Nitril NBR lieferbar. Andere Dichtungen auf Anfrage ebenfalls lieferbar. **Betriebstemperatur:** mit NBR Standard-Dichtung - 25°C + 125°C. **Stuetzring:** aus rein Teflon. **Gewinde:** metrische Aussengewinde nach DIN 2353 L (leichter Baureihe) oder S (schwerer Baureihe). Andere Gewinde auf Wunsch ebenfalls lieferbar.

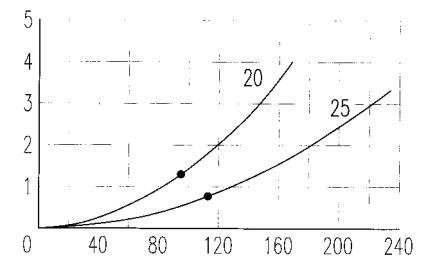
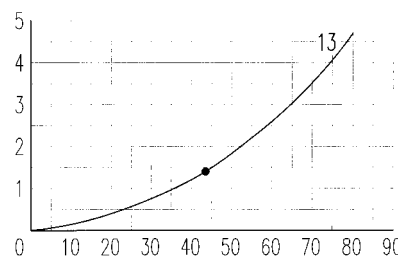
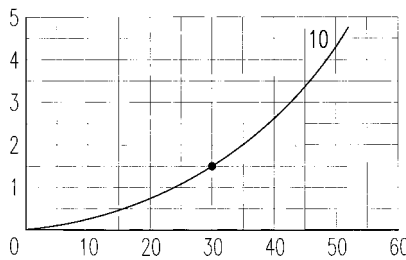
CARACTERISTIQUES TECHNIQUES

Matériel: acier au carbone et aciers spéciaux zingués et bichromatés jaunes. **Joints:** nitrile NBR en standard. Autres qualités sur demande. **Température de service:** avec joints standard - 25°C + 125°C. **Bague anti-extrusion:** en Teflon pur. **Taraudage:** métriques externes selon DIN 2353 L (série légère) ou S (série lourde). Autres taraudages sur demande.

Dimensione nominale Nominal size Nennmass Dimension nominale				DN (mm)	Press. max d'esercizio Max working pressure Max Betriebsdruck Press. de service max (bar)	Portata nominale Rated flow Durchfluss Débit (l/m)	Pressione min di scoppio / Min burst pressure Min Berstdruck / Pression d'éclatement min			Spillaggio / Fluid spillage Ölverlust / Ecoulement (cc)
DNP	BG	USA	ISO				Maschio / Male Stecker / Mâle (bar)	Femmina / Female Muffe / Femelle (bar)	Innestato / Coupled Gekuppelt / Accouplé (bar)	
10	2	06	10	9	450	30	1500	1670	2000	1.4
13	3	08	12.5	10.6	400	43	1300	1400	1460	2.7
20	4	12	20	15.7	400	93	1200	1460	1480	9.3
25	5	16	25	17.3	300	113	1080	1100	1070	16

PERDITA DI CARICO / PRESSURE DROP / DRUCKVERLUST / DEBIT DE PRESSION (Δp bar - l/m)

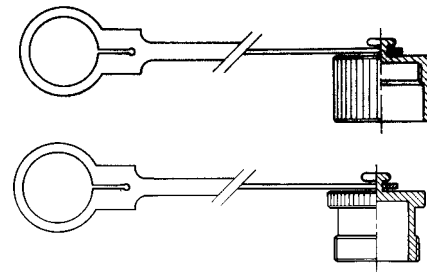
Δp (bar)



l/m

ACCESSORI / ACCESSORIES / ZUBEHÖR / ACCESSOIRES

DNP size	Cappuccio per fem. Female dust plug Staubkappe für Muffe Capuchon pour fem.	Tappo per masc. Male dust plug Staubstecker für Stecker Bouchon pour mâle	Colore Colour Farbe Couleur	Materiale Material Werkstoff Matériel
10	SPVV.10002	SPVV.10003	ROSSO / RED	POLIETILENE / POLYETHYLENE
13	SPVV.13002	SPVV.13003	ROSSO / RED	POLIETILENE / POLYETHYLENE
20	SPVV.20002	SPVV.20003	ROSSO / RED	POLIETILENE / POLYETHYLENE
25	SPVV.25002	SPVV.25003	ROSSO / RED	POLIETILENE / POLYETHYLENE



GUARNIZIONI DI RICAMBIO / SPARE PARTS / ERSATZDICHTUNGEN / JOINTS

DNP size	O-RING FEMMINA / FEMALE O-RING MUFFE O-RING / O-RING FEMELLE	DNP size	O-RING ESTERNO FEMMINA / OUTSIDE FEMALE O-RING MUFFE BREMSRING / O-RING FEMELLE EXTERIEUR	DNP size	ANTIESTRUS.FEM / FEM. BACK-UP RING MUFFE STÜTZRING / CONTRE-JOINT FEM.
10	PVV.010.120 NBR	PVV.010.120 V	VITON	10	PVV.010.130 PTFE
13	PVV.013.120	PVV.013.120 V		13	PVV.013.130
20	PDV.019.120	PDV.019.120 V		20	PVV.019.130
25	PAV.025.120	PAV.025.120 V		25	PVV.025.130